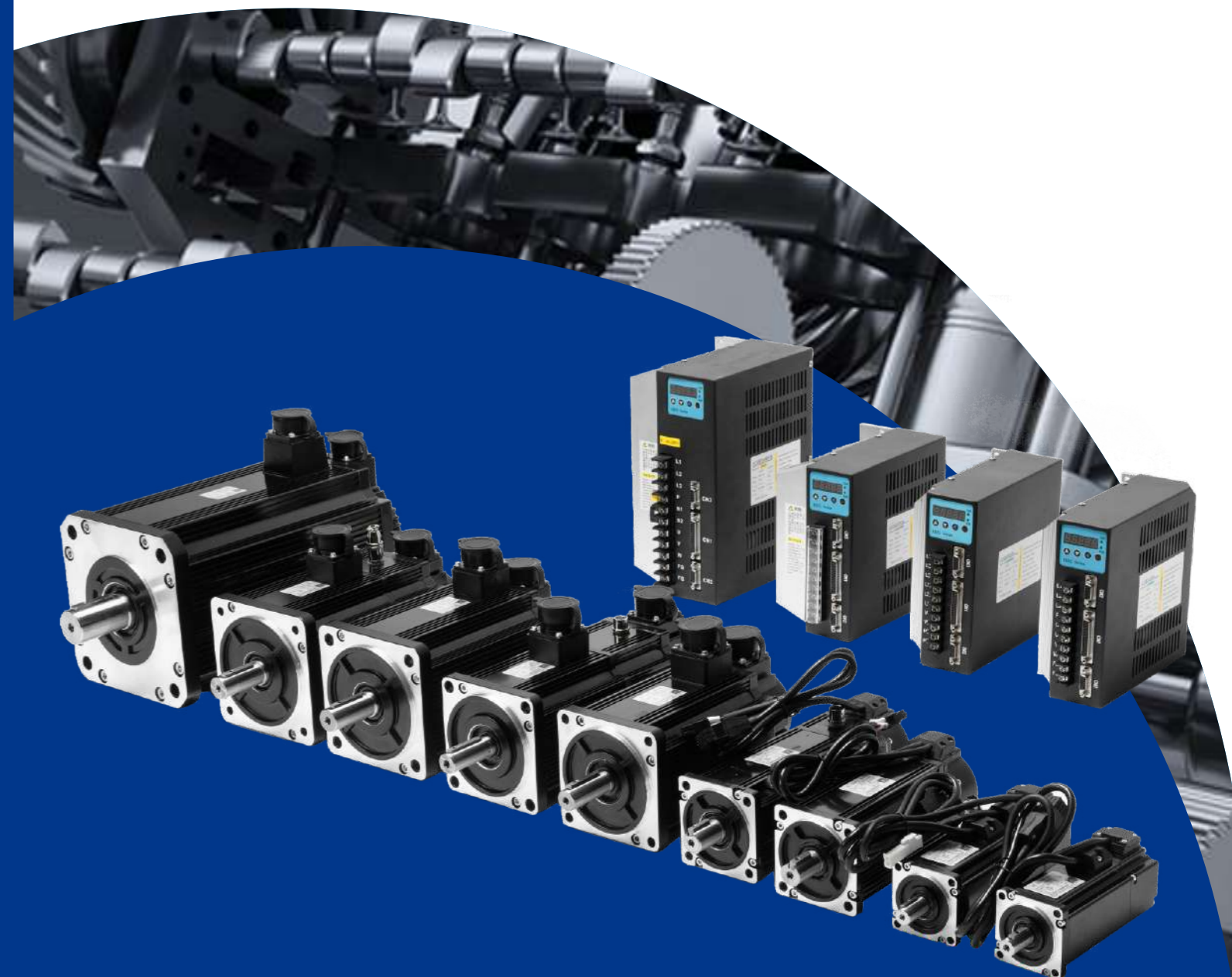


SERVO MOTOR SELECTION GUIDE FOR AUTOMATION



TORQUEBANK TECHNOLOGY CO.,LTD

Dongzhou Industrial Function Zone, Fuyang District, Hangzhou, China

info@torquebank.com

WWW.TORQUEBANK.COM

TorqueBank

NAMING RULES

The motor model naming method is as follows:

180	A6	ST	—	M	480	15	LB	Z	F
①	②	③	④	⑤	⑥	⑦	⑧	⑨	⑩

①		②		③		④		⑤	
Symbol	Specification	Symbol	Specification	Symbol	Specification	Symbol	Specification	Symbol	Specification
60	60Flange	A5	General series Omitted here	ST	Sine wave drive	—	Connectors	M	Incremental photoelectric encoder
80	80Flange							C	Incremental magnetic encoder
130	130Flange	X6	X6Series					S	Wire-saving encoder
180	180Flange	A6	A6Series					J	17-bit photoelectric absolute encoder
		H6	H6Series					J2	23-bit photoelectric absolute encoder
								JC	17-bit absolute magnetic encoder
								X	Revolving transformer

⑥		⑦		⑧		⑨		⑩	
Symbol	Specification	Symbol	Specification	Symbol	Specification	Symbol	Specification	Symbol	Specification
024	2.4N · m	10	1000rpm	LB	250V	Z	With brakes	F	With fan
040	4N · m	15	1500rpm	HB	380V	Omit	No brakes	Omit	No fan
100	10N · m	20	2000rpm						
480	48N · m	25	2500rpm						
955	95.5N · m	30	3000rpm						
A20	120N · m								
B50	250N · m								

APPLICATION AREA



Security Monitoring



Electric Forklift



Textile Machinery

The Machine Hand



Numerical Control



Automated Guided Vehicle



APPLICATION AREA



PRODUCT CONTENTS

AC A5 Family

04-15	60A5 ST	04
	80A5 ST	05
	90A5 ST	06
	110A5 ST	07
	130A5 ST	08
	180A5 ST	10
	200A5 ST	12
	220A5 ST	14
	263A5 ST	15



AC A6 Family

16-19	60A6 ST	16
	80A6 ST	17
	130A6 ST	18
	180A6 ST	19

AC H6 Family

20-22	110H6 ST	20
	130H6 ST	21

AC X6 Family

23-25	60X6 ST	23
	80X6 ST	24
	130X6 ST	25

AC G6 Family

26	130G6 ST	26
----	----------	----

AC Direct Drive Family

27-29	210 ST	27
	260 ZQ	28
	290 ZQ	29

DC 24V Family

30-32	40A ST	30
	60A ST	31
	80 ST	32

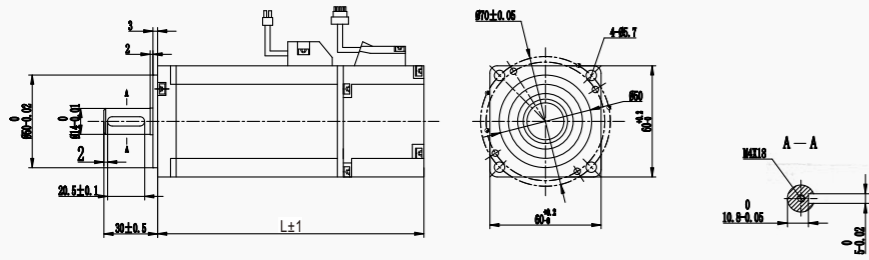
DC 48V Family

33-36	40A ST	33
	60A ST	34
	80 ST	35
	130 ST	36

SERIES SERVO MOTORS

60A5 ST

DIMENSION:UNIT=mm



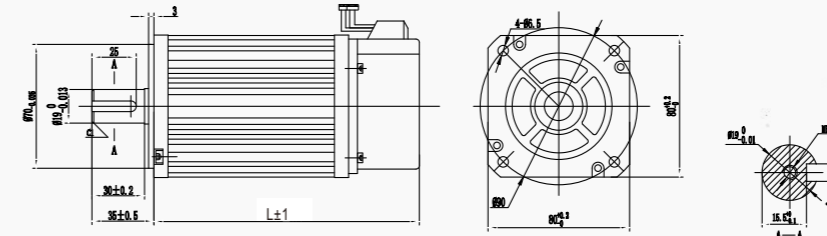
SPECIFICATIONS

MOTER MODEL	60AST-M00630	60AST-M01330	60AST-M01930													
Rated Power(kW)	0.2	0.4	0.6													
Rated Voltage(V)	220	220	220													
Rated Current(A)	1.2	2.8	3.5													
Rated Speed(rpm)	3000	3000	3000													
Rated Torque(N.m)	0.637	1.27	1.91													
Peak Torque(N.m)	1.91	3.9	5.73													
Voltage Constant (V/1000r / min)	30.9	29.6	34													
Torque Coefficient(N.m /A)	0.53	0.45	0.55													
Rotor Inertia(kg.m ²)	0.175x10 ⁻⁴	0.29x10 ⁻⁴	0.39x10 ⁻⁴													
Line-line Resistance(Ω)	6.18	2.35	1.93													
Line-line Inductance(mH)	29.3	14.5	10.7													
Electrical Time-constant(ms)	4.74	6.17	5.5													
Weight(kg)	1.16	1.6	2.07													
Encord Line Number(PPR)	2500ppr/17bit/23bit/rotary															
Insulation Class	ClassF															
Safety Class	IP65															
L Without Electric Brake	116	141	169													
L With Electromagnetic Brake	154	179	207													
Environment	TEMPERATURE:-20°C~+40°C HUMIDITY BELOW 90 %RH NO DEWING															
Motor Winding Plug	Incremental Encoder Motor Winding Leads	U(red)	V(yellow)	W(blue)	Pe(yellow green)											
	Absolute Encoder Motor Winding Leads	Pe(yellow green)	U(red)	V(blue)	W(yellow)											
Socket Number	1	2	3	4												
Photoelectric Encoder Socket (15Pin)	Winding Leads	5V	0V	B	Z-	U	Z	U-	A	V	W	V-	A-	B-	W-	PE
	Socket Number	2	3	4	5	6	7	8	9	10	11	12	13	14	15	1
Absolute Encoder Socket (7Pin)	Winding Leads	E-	E+	SD-	0V	SD+	+5V	PE								
	Socket Number	2	3	4	5	6	7	1								

SERIES SERVO MOTORS

80A5 ST

DIMENSION:UNIT=mm



SPECIFICATIONS

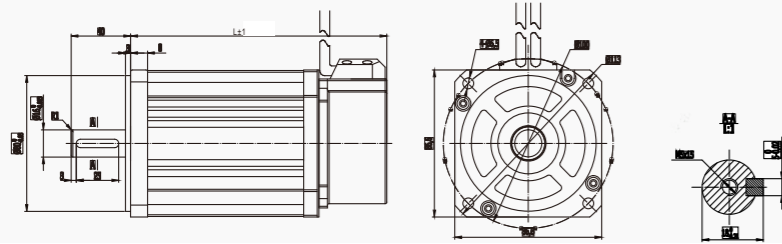
MOTER MODEL	80ST-M01330	80ST-M02430	80ST-M03520	80ST-M04025												
Rated Power(kW)	0.4	0.75	0.73	1.0												
Rated Voltage(V)	220	220	220	220												
Rated Current(A)	2	3	3	4.4												
Rated Speed(rpm)	3000	3000	2000	2500												
Rated Torque(N.m)	1.27	2.39	3.5	4												
Peak Torque(N.m)	3.8	7.1	10.5	12												
Voltage Constant (V/1000r / min)	40	48	71	56												
Torque Coefficient(N.m /A)	0.64	0.8	1.17	0.9												
Rotor Inertia(kg.m ²)	1.05x10 ⁻⁴	1.82x10 ⁻⁴	2.63x10 ⁻⁴	2.97x10 ⁻⁴												
Line-line Resistance(Ω)	4.44	2.88	3.65	1.83												
Line-line Inductance(mH)	7.93	6.4	8.8	4.72												
Electrical Time-constant(ms)	1.66	2.22	2.4	2.58												
Weight(kg)	1.78	2.9	3.9	4.1												
Encord Line Number(PPR)	2500ppr/17bit/23bit/rotary															
Insulation Class	ClassF															
Safety Class	IP65															
L Without Electric Brake	124	151	179	191												
L With Electromagnetic Brake	164	191	291	231												
Environment	TEMPERATURE:-20°C~+40°C HUMIDITY BELOW 90%RH NO DEWING															
Motor Winding Plug	Incremental Encoder Motor Winding Leads	U(red)	V(yellow)	W(blue)	Pe(yellow green)											
	Absolute Encoder Motor Winding Leads	Pe(yellow green)	U(red)	V(blue)	W(yellow)											
Socket Number	1	2	3	4												
Photoelectric Encoder Socket (15Pin)	Winding Leads	5V	0V	B	Z-	U	Z	U-	A	V	W	V-	A-	B-	W-	PE
	Socket Number	2	3	4	5	6	7	8	9	10	11	12	13	14	15	1
Absolute Encoder Socket (7Pin)	Winding Leads	E-	E+	SD-	0V	SD+	+5V	PE								
	Socket Number	2	3	4	5	6	7	1								

SERIES SERVO MOTORS

90A5 ST

伺服电机

DIMENSION:UNIT=mm



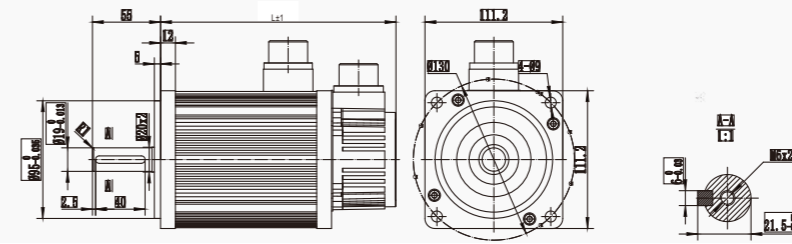
SPECIFICATIONS

MOTER MODEL	90ST-M02430	90ST-M03520	90ST-M04025
Rated Power(kW)	0.75	0.73	1.0
Rated Voltage(V)	220	220	220
Rated Current(A)	3	3	4
Rated Speed(rpm)	3000	2000	2500
Rated Torque(N.m)	2.4	3.5	4
Peak Torque(N.m)	7.1	10.5	12
Peak Current(A)	9	9	12
Voltage Constant (V/1000r / min)	51	67	60
Torque Coefficient(N.m /A)	0.8	1.2	1.0
Rotor Inertia(kg.m ²)	2.45x10 ⁻⁴	3.4x10 ⁻⁴	3.7x10 ⁻⁴
Line-line Resistance(Ω)	3.2	4.06	2.69
Line-line Inductance(mH)	7.0	9.7	6.21
Electrical Time-constant(ms)	2.2	2.93	2.3
Weight(kg)	3.1	3.9	4.2
Encord Line Number(PPR)	2500ppr/17bit/23bit/rotary		
Insulation Class	ClassF		
Safety Class	IP65		
L Without Electric Brake	150	172	182
L With Electromagnetic Brake	198	220	230
Environment	TEMPERATURE:-20℃~+40℃ HUMIDITY BELOW 90%RH NO DEWING		
Motor Winding Plue	Incremental Encoder Motor Winding Leads		U(red) V(yellow) W(blue) Pe(yellow green)
	Absolute Encoder Motor Winding Leads		Pe(yellow green) U(red) V(blue) W(yellow)
Photoelectric Encoder Socket (15Pin)	Winding Leads		5V 0V B Z- U Z U- A V W V- A- B- W- PE
	Socket Number		2 3 4 5 6 7 8 9 10 11 12 13 14 15 1
Absolute Encoder Socket (7Pin)	Winding Leads		E- E+ SD- 0V SD+ +5V PE
	Socket Number		2 3 4 5 6 7 1

SERIES SERVO MOTORS

110A5 ST

DIMENSION:UNIT=mm



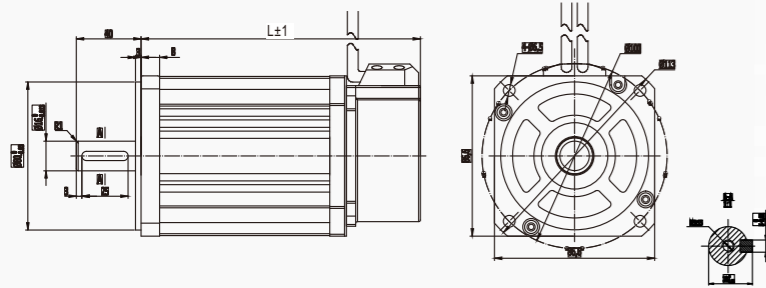
SPECIFICATIONS

MOTER MODEL	110ST-M02030	110ST-M04020	110ST-M04030	110ST-M05030	110ST-M06020	110ST-M06030
Rated Power(kW)	0.6	0.8	1.2	1.5	1.2	1.8
Rated Voltage(V)	220	220	220	220	220	220
Rated Current(A)	2.5	3.5	5.0	6.0	4.5	6.0
Rated Speed(rpm)	3000	2000	3000	3000	2000	3000
Rated Torque(N.m)	2	4	4	5	6	6
Peak Torque(N.m)	6	12	12	15	12	18
Voltage Constant (V/1000r / min)	56	79	54	62	83	60
Torque Coefficient(N.m /A)	0.8	1.14	0.8	0.83	1.3	1.0
Rotor Inertia(kg.m ²)	0.31x10 ⁻³	0.54x10 ⁻³	0.54x10 ⁻³	0.63x10 ⁻³	0.76x10 ⁻³	0.76x10 ⁻³
Line-line Resistance(Ω)	3.6	2.41	1.09	1.03	1.46	0.81
Line-line Inductance(mH)	8.32	7.3	3.3	3.43	4.7	2.59
Electrical Time-constant(ms)	2.3	3	3	3.33	3.2	3.2
Weight(kg)	4.5	6	6	6.8	7.9	7.9
Encord Line Number(PPR)	2500ppr/17bit/23bit/rotary					
Insulation Class	ClassF					
Safety Class	Ip65					
Rated Torque (N·m)	2	4	5	6		
L Without Electric Brake	159	189	204	219		
L With Electromagnetic Brake	233	263	278	293		
Environment	TEMPERATURE:-20℃~+40℃ HUMIDITY BELOW 90%RH NO DEWING					
Motor Winding Plue	Winding Leads		U	V	W	PE
	Socket Number		2	3	4	1
Photoelectric Encoder Socket (15Pin)	Winding Leads		5V 0V A+ B+ Z+ A- B- Z- U+ V+ W+ U- V- W- PE			
	Socket Number		2 3 4 5 6 7 8 9 10 11 12 13 14 15 1			
Absolute Encoder Socket (7Pin)	Winding Leads		E- E+ SD- 0V SD+ +5V PE			
	Socket Number		2 3 4 5 6 7 1			

SERIES SERVO MOTORS

130A5 ST

DIMENSION:UNIT=mm



SPECIFICATIONS

MOTER MODEL	130ST-M04025	130ST-M05025	130ST-M06025	130ST-M07725	130ST-M10010											
Rated Power(kW)	1.0	1.3	1.5	2.0	1.0											
Rated Voltage(V)	220	220	220	220	220											
Rated Current(A)	4.0	5.0	6.0	7.5	4.5											
Rated Speed(rpm)	2500	2500	2500	2500	1000											
Rated Torque(N.m)	4	5	6	7.7	10											
Peak Torque(N.m)	12	15	18	22	20											
Voltage Constant (V/1000r / min)	72	68	65	68	140											
Torque Coefficient(N.m /A)	1.0	1.0	1.0	1.03	2.2											
Rotor Inertia(kg.m ²)	0.85x10 ⁻³	1.06x10 ⁻³	1.26x10 ⁻³	1.53x10 ⁻³	1.94x10 ⁻³											
Line-line Resistance(Ω)	2.76	1.84	1.21	1.01	2.7											
Line-line Inductance(mH)	6.42	4.9	3.78	2.94	8.8											
Electrical Time-constant(ms)	2.32	2.66	3.26	2.91	3.26											
Weight(kg)	6.2	6.6	7.4	8.3	10.2											
Encord Line Number(PPR)	2500ppr/17bit/23bit/rotary															
Insulation Class	ClassF															
Safety Class	Ip65															
Environment	TEMPERATURE:-20°C~+40°C HUMIDITY BELOW 90%RH NO DEWING															
Motor Winding Plue	Winding Leads Socket Number	U 2	V 3	W 4	PE 1											
Photoelectric Encoder Socket (15Pin)	Winding Leads Socket Number	5V 2	0V 3	A+ 4	B+ 5	Z+ 6	A- 7	B- 8	Z- 9	U+ 10	V+ 11	W+ 12	U- 13	V- 14	W- 15	PE 1
Absolute Encoder Socket (7Pin)	Winding Leads Socket Number	E- 2	E+ 3	SD- 4	0V 5	SD+ 6	+5V 7	PE 1								

SERIES SERVO MOTORS

130A5 ST

SPECIFICATIONS

MOTER MODEL	130ST-M10015	130ST-M10025	130ST-M15015	130ST-M15025												
Rated Power(kW)	1.5	2.6	2.3	3.8												
Rated Voltage(V)	220	220	220	220												
Rated Current(A)	6	10	9.5	13.5												
Rated Speed(rpm)	1500	2500	1500	2500												
Rated Torque(N.m)	10	10	15	15												
Peak Torque(N.m)	25	25	30	30												
Voltage Constant (V/1000r / min)	103	70	114	67												
Torque Coefficient(N.m /A)	1.67	1.0	1.58	1.11												
Rotor Inertia(kg.m ²)	1.94x10 ⁻³	1.94x10 ⁻³	2.77x10 ⁻³	2.77x10 ⁻³												
Line-line Resistance(Ω)	1.5	0.73	1.1	0.49												
Line-line Inductance(mH)	4.37	2.45	4.45	1.68												
Electrical Time-constant(ms)	2.91	3.36	4.05	3.43												
Weight(kg)	10.2	10.2	12.6	11.7												
Encord Line Number(PPR)	2500ppr/17bit/23bit/rotary															
Insulation Class	ClassF															
Safety Class	Ip65															
Environment	TEMPERATURE:-20°C~+40°C HUMIDITY BELOW 90%RH NO DEWING															
Motor Winding Plue	Winding Leads Socket Number	U 2	V 3	W 4	PE 1											
Photoelectric Encoder Socket (15Pin)	Winding Leads Socket Number	5V 2	0V 3	A+ 4	B+ 5	Z+ 6	A- 7	B- 8	Z- 9	U+ 10	V+ 11	W+ 12	U- 13	V- 14	W- 15	PE 1
Absolute Encoder Socket (7Pin)	Winding Leads Socket Number	E- 2	E+ 3	SD- 4	0V 5	SD+ 6	+5V 7	PE 1								

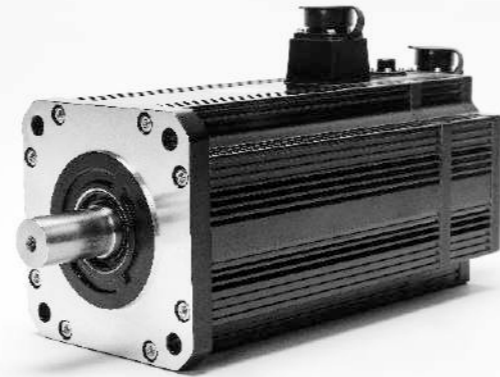
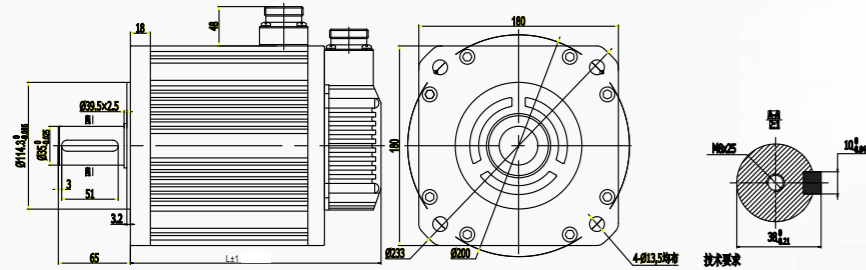
103A5 series servo motor body length

Rated Torque (N·m)	4	5	6	7.7	10	15
						1500rpm 2500rpm
L Without Electric Brake	166	171	179	192	213	241 231
L With Electromagnetic Brake	223	228	236	249	294	322 312

SERIES SERVO MOTORS

180A5 ST

DIMENSION:UNIT=mm



SPECIFICATIONS

MOTER MODEL	180ST-M17215	180AST-M19015	180ST-M21520	180ST-M27010	
Rated Power(kW)	2.7	3.0	4.5	2.9	
Rated Voltage(V)	220 380	220 380	220 380	220 380	
Rated Current(A)	10.5 6.5	12 7.5	16 9.5	12 7.5	
Rated Speed(rpm)	1500	1500	2000	1000	
Rated Torque(N.m)	17.2	19	21.5	27	
Peak Torque(N.m)	43	47	53	67	
Voltage Constant (V/1000r / min)	112 167	97 170	84 140	138 224	
Torque Coefficient(N.m /A)	1.64 2.65	1.58 2.5	1.34 2.26	2.25 3.6	
Rotor Inertia(kg.m ²)	6.5x10 ⁻³	7.0x10 ⁻³	7.69x10 ⁻³	9.64x10 ⁻³	
Line-line Resistance(Ω)	0.7 1.47	0.4 1.23	0.24 0.71	0.48 1.37	
Line-line Inductance(mH)	3.5 7.8	2.42 7.3	1.45 4	3.26 8.6	
Electrical Time-constant(ms)	5 5.3	6 5.93	6 5.6	6.79 6.27	
Weight(kg)	19.5	20.5	22.2	25.5	
Encord Line Number(PPR)	2500ppr/17bit/23bit/rotary				
Insulation Class	ClassF				
Safety Class	IP65				
Environment	TEMPERATURE:-20℃~+40℃ HUMIDITY BELOW 90%RH NO DEWING				
Motor Winding Plue	Winding Leads Socket Number	U 2	V 3	W 4	PE 1
Photoelectric Encoder Socket (15Pin)	Winding Leads Socket Number	5V 0V A+ B+ Z+ A- B- Z- U+ V+ W+ U- V- W- PE	2 3 4 5 6 7 8 9 10 11 12 13 14 15 1		
Absolute Encoder Socket (7Pin)	Winding Leads Socket Number	E- E+ SD- 0V SD+ +5V PE	2 3 4 5 6 7 1		

SERIES SERVO MOTORS

180A5 ST

SPECIFICATIONS

MOTER MODEL	180ST-M27015	180ST-M35010	180ST-M35015	180ST-M48015	
Rated Power(kW)	4.3	3.7	5.5	7.5	
Rated Voltage(V)	220 380	220 380	220 380	220 380	
Rated Current(A)	16 10	16 10	24 12	32 20	
Rated Speed(rpm)	1500	1000	1500	1500	
Rated Torque(N.m)	27	35	35	48	
Peak Torque(N.m)	67	87.5	87.5	120	
Voltage Constant (V/1000r / min)	103 172	134 223	90 181	94 156	
Torque Coefficient(N.m /A)	1.69 2.7	2.2 3.5	1.45 2.9	1.5 2.4	
Rotor Inertia(kg.m ²)	9.64x10 ⁻³	12.25x10 ⁻³	12.25x10 ⁻³	16.72x10 ⁻³	
Line-line Resistance(Ω)	0.28 0.796	0.31 0.93	0.14 0.62	0.104 0.273	
Line-line Inductance(mH)	1.74 4.83	2.11 5.86	1.0 4	0.77 2.14	
Electrical Time-constant(ms)	6.2 6	6.8 6.3	7.14 6.45	7.4 7.8	
Weight(kg)	25.5	30.5	30.5	40	
Encord Line Number(PPR)	2500ppr/17bit/23bit/rotary				
Insulation Class	ClassF				
Safety Class	Ip65				
Environment	TEMPERATURE:-20℃~+40℃ HUMIDITY BELOW 90%RH NO DEWING				
Motor Winding Plue	Winding Leads Socket Number	U 2	V 3	W 4	PE 1
Photoelectric Encoder Socket (15Pin)	Winding Leads Socket Number	5V 0V A+ B+ Z+ A- B- Z- U+ V+ W+ U- V- W- PE	2 3 4 5 6 7 8 9 10 11 12 13 14 15 1		
Absolute Encoder Socket (7Pin)	Winding Leads Socket Number	E- E+ SD- 0V SD+ +5V PE	2 3 4 5 6 7 1		

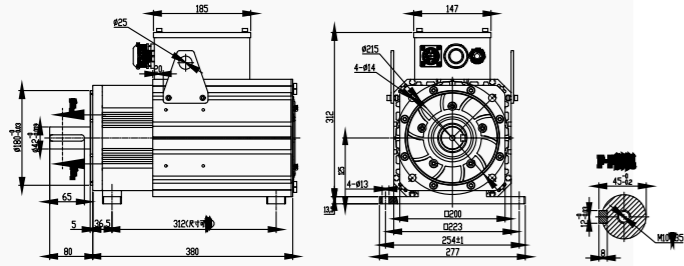
180A5 series servo motor body length

Rated Torque (N-m)	17.2	19	21.5	27	35	48
L Without Electric Brake	226	232	243	262	292	346
L With Electromagnetic Brake	308	304	315	334	364	418

SERIES SERVO MOTORS

200A5 ST

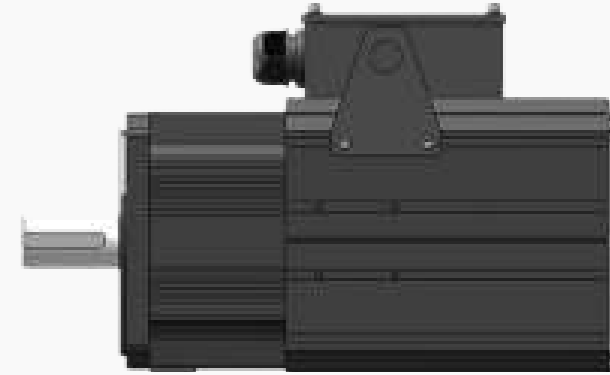
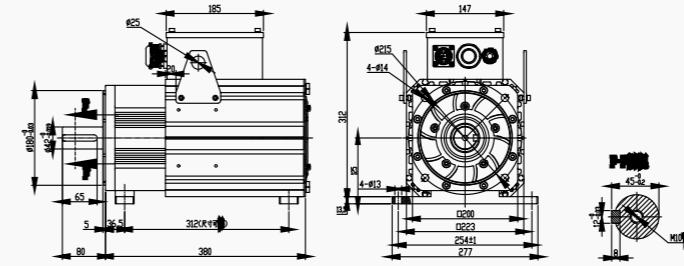
DIMENSION:UNIT=mm



SERIES SERVO MOTORS

200A5 ST

DIMENSION:UNIT=mm



SPECIFICATIONS

MOTER MODEL	200ST-M43017	200ST-M62017	200ST-M86017	200ST-MA0517												
Rated Power(kW)	7.6	11	15.3	18.7												
Rated Speed(rpm)	1700	1700	1700	1700												
Rated Torque(N.m)	43	62	86	105												
Rated Voltage(V)	380	380	380	380												
Rated Current(A)	15	22	30	37												
Frequence(HZ)	113.3	113.3	113.3	113.3												
Voltage Constant(V/1000r/min)	310/1700	306/1700	307/1700	295/1700												
Torque Coefficient(N.m/A)	2.87	2.82	2.87	2.84												
Rotor Inertia(kg.m ²)	5.8x10 ⁻³	7.5x10 ⁻³	9.8x10 ⁻³	11.4x10 ⁻³												
Line-line Resistance(Ω)	1.12	0.58	0.34	0.31												
Line-line Inductance(mH)	12.1	7.9	5.1	4.8												
L1(mm)	312	312	312	312												
L2(mm)	344	380	416	452												
Encord Line Number(PPR)	Absolute Value / Rotary															
Insulation Class	ClassF															
Safety Class	Ip54															
Environment	TEMPERATURE:-20°C~+40°C HUMIDITY BELOW 90%RH NO DEWING															
Motor Winding Plue	Motor Winding Leads	U	V	W	PE											
Photoelectric Encoder Socket (15Pin)	Signal Leads	5V	0V	A+	B+	Z+	A-	B-	Z-	U+	V+	W+	U-	V-	W-	PE
	Socket Number	2	3	4	5	6	7	8	9	10	11	12	13	14	15	1
Absolute Encoder Socket (7Pin)	Signal Leads	E-	E+	SD-	0V	SD+	+5V	PE								
	Socket Number	2	3	4	5	6	7	1								

SPECIFICATIONS

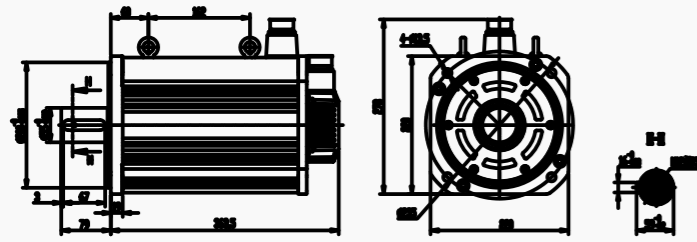
MOTER MODEL	200ST-MA2917	200ST-MA4917	200ST-MA7717	200ST-MA9617												
Rated Power(kW)	23	26.5	31.5	35												
Rated Speed(rpm)	1700	1700	1700	1700												
Rated Torque(N.m)	129	149	177	196												
Rated Voltage(V)	380	380	380	380												
Rated Current(A)	45	54	57	70												
Frequence(HZ)	113.3	113.3	113.3	113.3												
Voltage Constant(V/1000r/min)	304/1700	298/1700	330/1700	315/1700												
Torque Coefficient(N.m/A)	2.87	2.76	3.11	2.8												
Rotor Inertia(kg.m ²)	13.1x10 ⁻³	14.5x10 ⁻³	15.9x10 ⁻³	17.4x10 ⁻³												
Line-line Resistance(Ω)	0.22	0.15	0.15	0.27												
Line-line Inductance(mH)	3.9	2.8	2.5	2.2												
L1(mm)	312	396	396	396												
L2(mm)	488	524	560	596												
Encord Line Number(PPR)	Absolute Value / rotary															
Insulation Class	ClassF															
Safety Class	Ip54															
Environment	TEMPERATURE:-20°C~+40°C HUMIDITY BELOW 90%RH NO DEWING															
Motor Winding Plue	Motor Winding Leads	U	V	W	PE											
Photoelectric Encoder Socket (15Pin)	Signal Leads	5V	0V	A+	B+	Z+	A-	B-	Z-	U+	V+	W+	U-	V-	W-	PE
	Socket Number	2	3	4	5	6	7	8	9	10	11	12	13	14	15	1
Absolute Encoder Socket (7Pin)	Signal Leads	E-	E+	SD-	0V	SD+	+5V	PE								
	Socket Number	2	3	4	5	6	7	1								

SERIES SERVO MOTORS

220A5 ST

DIMENSION:UNIT=mm

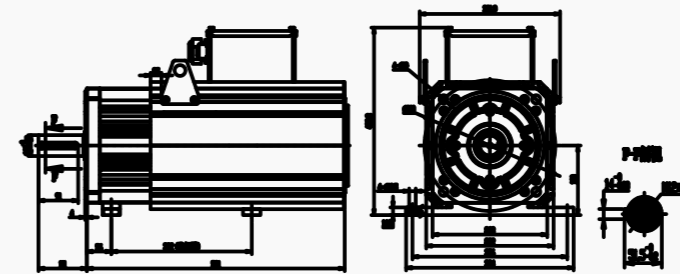
MOTOR MODEL	67N	95.5N
L	301	363
L1	100	162



SERIES SERVO MOTORS

263A5 ST

DIMENSION:UNIT=mm



SPECIFICATIONS

MOTER MODEL	220ST-M67010	220ST-M95515	220ST-M67015	220ST-M95515
Rated Power(kW)	7.0	15	10.5	15
Rated Voltage(V)	220	220	380	380
Rated Current(A)	31.3	67	26	38
Rated Speed(rpm)	1000	1500	1500	1500
Rated Torque(N.m)	67	95.5	67	95.5
Peak Torque(N.m)	150	240	150	240
Voltage Constant(V/1000r/min)	140	95	175	169
Torque Coefficient(N.m/A)	2.1	1.42	2.58	2.51
Rotor Inertia(kg.m ²)	177x10 ⁻⁴	248x10 ⁻⁴	177x10 ⁻⁴	248x10 ⁻⁴
Line-line Resistance(Ω)	0.133	0.05	0.2	0.14
Line-line Inductance(mH)	3.8	1.2	5.81	3.79
Electrical Time-constant(ms)	28.5	24	29.05	27.09
Weight(kg)	50	73	50	73
Encord Line Number(PPR)	Absolute Value / rotary			
Insulation Class	ClassF			
Safety Class	IP65			
L Without electric brake	124	151	179	191
L With Permanent Magnet Brake	178	205	233	245
L With Electromagnetic Brake	164	191	291	231
Environment	TEMPERATURE:-20°C~+40°C HUMIDITY BELOW 90%RH NO DEWING			
Motor Winding Plug	Absolute Encoder Motor Winding Leads		V	W
	Socket Number	2	3	4
Photoelectric Encoder Socket (15Pin)	Winding Leads 5V 0V A+ B+ Z+ A- B- Z- U+ V+ W+ U- V- W- PE			
	Socket Number	2	3	4
Absolute Encoder Socket (7Pin)	Winding Leads E- E+ SD- 0V SD+ +5V PE			
	Socket Number	2	3	4

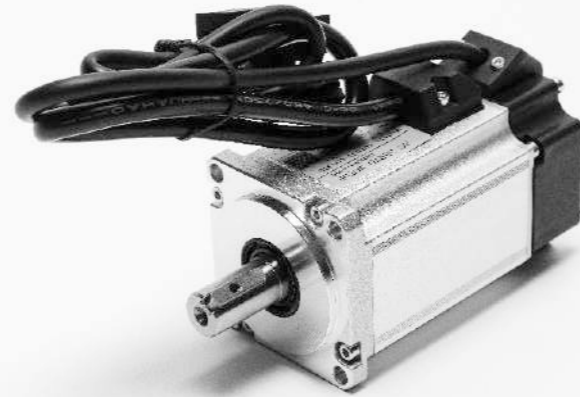
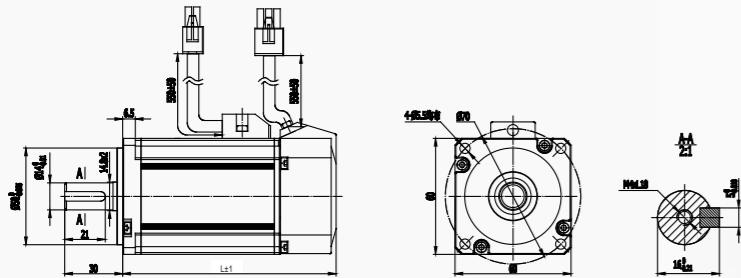
SPECIFICATIONS

MOTER MODEL	263ST-MA3217	263ST-MA7517	263ST-MB0817	263ST-MB5517	263ST-MC2517
Rated Power(kW)	23.5	31	37	45.4	57.6
Rated Speed(rpm)	1700	1700	1700	1700	1700
Rated Torque(N.m)	132	175	208	255	325
Rated Voltage(V)	380	380	380	380	380
Rated Current(A)	45.4	64	74	87	116
Frequence(HZ)	113.3	113.3	113.3	113.3	113.3
Voltage Constant(V/1000r/min)	316/1700	310/1700	305/1700	328/1700	306/1700
Torque Coefficient(N.m/A)	2.91	2.73	2.81	2.93	2.8
Rotor Inertia(kg.m ²)	28x10 ⁻³	35x10 ⁻³	42x10 ⁻³	50x10 ⁻³	58x10 ⁻³
Line-line Resistance(Ω)	0.13	0.15	0.11	0.05	0.041
Line-line Inductance(mH)	2.17	6.51	3.21	1.18	1.02
L1(mm)	322	322	322	322	322
L2(mm)	470	510	550	590	630
Encord Line Number(PPR)	Absolute Value / rotary				
Insulation Class	ClassF				
Safety Class	Ip54				
Environment	TEMPERATURE:-20°C~+40°C HUMIDITY BELOW 90%RH NO DEWING				
Motor Winding Plug	Motor Winding Leads U		V	W	PE
Photoelectric Encoder Socket (15Pin)	Signal Leads 5V 0V A+ B+ Z+ A- B- Z- U+ V+ W+ U- V- W- PE				
	Socket Number	2	3	4	5
Absolute Encoder Socket (7Pin)	Signal Leads E- E+ SD- 0V SD+ +5V PE				
	Socket Number	2	3	4	5

SERIES SERVO MOTORS

60A6 ST

DIMENSION:UNIT=mm



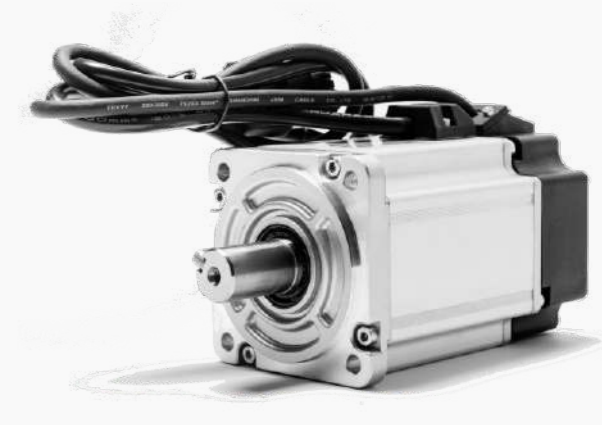
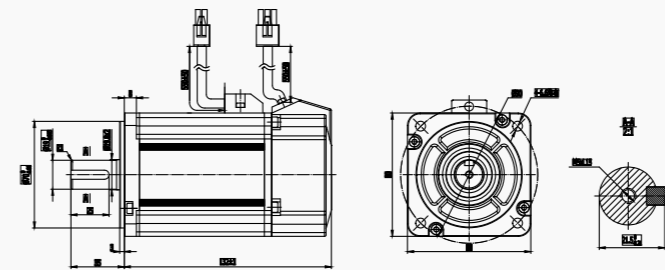
SPECIFICATIONS

MOTER MODEL	60A6ST-M00630	60A6ST-M01330	60A6ST-M01930												
Rated Power(kW)	0.2	0.4	0.6												
Rated Voltage(V)	220	220	220												
Rated Current(A)	1.70	2.50	4.10												
Rated Speed(rpm)	3000	3000	3000												
Rated Torque(N.m)	0.64	1.27	1.91												
Peak Torque(N.m)	1.92	3.81	5.73												
Voltage Constant(V/1000r/min)	30.2	30.2	32.5												
Torque Coefficient(N.m/A)	0.376	0.438	0.465												
Rotor Inertia(kg.m ²)	0.28x10 ⁻⁴	0.52x10 ⁻⁴	0.78x10 ⁻⁴												
Line-line Resistance(Ω)	4.5	3.3	2.5												
Line-line Inductance(mH)	10.8	6.9	4.5												
Electrical Time-constant(ms)	2.4	2.09	1.8												
Weight(kg)	0.88	1.06	1.3												
L (magnetic encoder)	91	109	127												
L (optical encoder)	103	121	139												
L (magnetic encoder brake)	127	145	163												
L (optical encoder brake)	139	157	175												
Insulation Class	ClassF														
Safety Class	IP65														
Environment	TEMPERATURE:-20°C~+40°C HUMIDITY BELOW 90%RH NO DEWING														
Motor Winding Plug	Incremental Encoder Motor Winding Leads	U(red)	V(white)	W(black)	Pe(yellow green)										
	Absolute Encoder Motor Winding Leads	Pe(yellow green)	U(red)	V(white)	W(black)										
Photoelectric Encoder Socket (15Pin)	Socket Number	1	2	3	4										
	Winding Leads	5V	0V	B	Z-	U	Z	U-	A	V	W	V-	A-	B-	W-
Absolute Encoder Socket (7Pin)	Socket Number	2	3	4	5	6	7	1							
	Winding Leads	E-	E+	SD-	0V	SD+	+5V	PE							

SERIES SERVO MOTORS

80A6 ST

DIMENSION:UNIT=mm



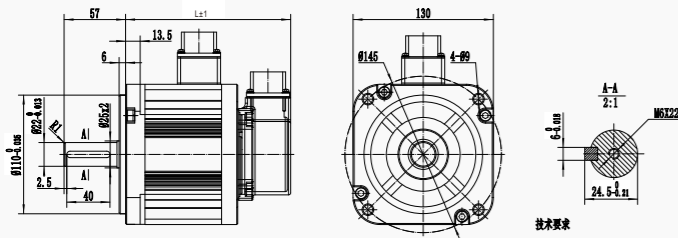
SPECIFICATIONS

MOTER MODEL	80A6ST-M01330	80A6ST-M02430	80A6ST-M03330	80A6ST-M04030										
Rated Power(kW)	0.4	0.75	1.0	1.2										
Rated Voltage(V)	220	220	220	220										
Rated Current(A)	2.7	5.0	5.4	6.7										
Rated Speed(rpm)	3000	3000	3000	3000										
Rated Torque(N.m)	1.27	2.39	3.3	4.0										
Peak Torque(N.m)	3.8	7.1	9.9	12.0										
Voltage Constant(V/1000r/min)	33.5	33.3	41.0	40.0										
Torque Coefficient(N.m/A)	0.47	0.48	0.6	0.6										
Rotor Inertia(kg.m ²)	0.82x10 ⁻⁴	1.41x10 ⁻⁴	1.81x10 ⁻⁴	2.21x10 ⁻⁴										
Line-line Resistance(Ω)	3.4	1.58	1.63	1.2										
Line-line Inductance(mH)	14.3	6.8	7.0	5.4										
Electrical Time-constant(ms)	4.2	4.3	4.3	4.5										
Weight(kg)	1.5	2.8	3.7	4.6										
L (magnetic encoder)	97	119	134	149										
L (optical encoder)	114	136	151	166										
L (magnetic encoder brake)	142	164	179	194										
L (optical encoder brake)	159	181	196	211										
Insulation Class	ClassF													
Safety Class	IP65													
Environment	TEMPERATURE:-20°C~+40°C HUMIDITY BELOW 90%RH NO DEWING													
Motor Winding Plug	Incremental Encoder Motor Winding Leads	U(red)	V(yellow)	W(blue)	Pe(yellow green)									
	Absolute Encoder Motor Winding Leads	Pe(yellow green)	U(red)	V(blue)	W(yellow)									
Photoelectric Encoder Socket (15Pin)	Socket Number	1	2	3	4									
	Winding Leads	5V	0V	Z-	U	Z	U-	A	V	W	V-	A-	B-	W-
Absolute Encoder Socket (7Pin)	Socket Number	2	3	4	5	6	7	1						
	Winding Leads	E-	E+	SD-	0V	SD+	+5V	PE						

SERIES SERVO MOTORS

130A6 ST

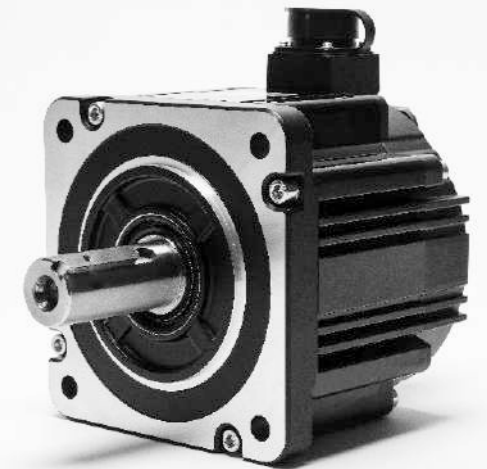
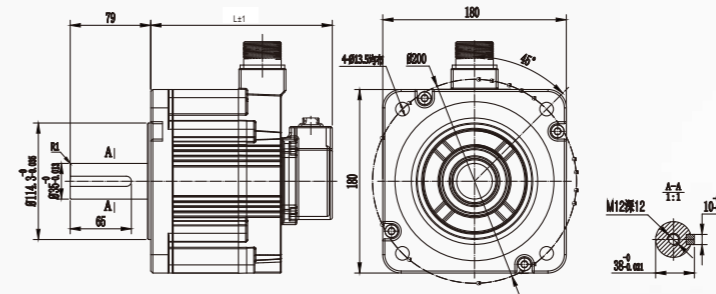
DIMENSION:UNIT=mm



SERIES SERVO MOTORS

180A6 ST

DIMENSION:UNIT=mm



SPECIFICATIONS

MOTER MODEL	130A6ST-M05415	130A6ST-M08315	130A6ST-M11515	130A6ST-M14615	130A6ST-M17815												
Rated Power(kW)	0.85	1.3	1.8	2.3	2.8												
Rated Voltage(V)	220	220	220	220	220												
Rated Current(A)	6.9	10.7	15	12.5	15.5												
Instantaneous Maximum Current(A)	17	28	42	37.5	46.5												
Rated Speed(rpm)	1500	1500	1500	1500	1500												
Rated Speed(rpm)	3000	3000	3000	2000	2000												
Rated Torque(N.m)	5.39	8.34	11.5	14.6	17.8												
Peak Torque(N.m)	14.2	23.3	28.7	43.8	53.4												
Voltage Constant(V/1000r/min)	50.2	52	52.2	76.5	76												
Torque Coefficient(N.m/A)	0.78	0.78	0.76	0.91	1.14												
Rotor Inertia(kg.m ²)	13.9x10 ⁻⁴	19.9x10 ⁻⁴	26x10 ⁻⁴	40.7x10 ⁻⁴	45.4x10 ⁻⁴												
With Brake Rotor Inertia(kg.m ²)	16x10 ⁻⁴	22x10 ⁻⁴	28.1x10 ⁻⁴	42.3x10 ⁻⁴	47.1x10 ⁻⁴												
Line-line Resistance(Ω)	0.98	0.54	0.42	0.69	0.46												
Line-line Resistance(mH)	12.32	8.5	6.2	10.25	10												
Electrical Time-constant(ms)	12.57	15.74	14.76	14.85	21.73												
Lock Rated Voltage(PPR)	24.0	24.0	24.0	24.0	24.0												
Encord Type	Photoelectric encorder/Absolute encorder/Rotary transformer....																
Insulation Class	ClassF																
Safety Class	Ip65																
Environment	TEMPERATURE:-20°C~+40°C HUMIDITY BELOW 90%RH NO DEWING																
L without electric brake	153	169	187	208.5	237.5												
L with electromagnetic brake	181	197	215	236.5	265.5												
Motor Winding Plue	Winding Leads U		V		W	PE											
	Aviation Plug Socket Number A		B		C	D											
Photoelectric Encoder Socket (15Pin)	Winding Leads		5V	0V	A+	B+	Z+	A-	B-	Z-	U+	V+	W+	U-	V-	W-	PE
	Socket Number		2	3	4	5	6	7	8	9	10	11	12	13	14	15	1
Absolute Encoder Socket (7Pin)	Winding Leads		E-	E+		SD-	0V	SD+	+5V		PE						
	Socket Number		2	3	4	5	6	7	1								

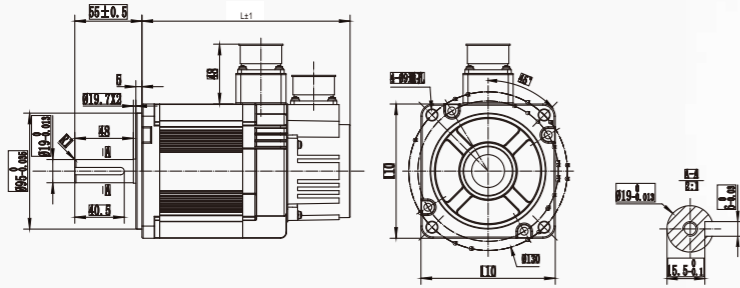
SPECIFICATIONS

MOTER MODEL	180A6ST-M18615	180A6ST-M28415	180A6ST-M35015	180A6ST-M48015													
Rated Power(kW)	2.9	4.4	5.5	7.5													
Rated Voltage(V)	380	380	380	380													
Rated Current(A)	10	14.5	17.6	23.0													
Rated Speed(rpm)	1500	1500	1500	1500													
Rated Torque(N.m)	18.6	28.4	35	48													
Peak Torque(N.m)	54	71	87.5	96													
Voltage Constant (V/1000r/min)	137.5	153	172	170													
Torque Coefficient(N.m/A)	1.86	1.95	1.98	2.09													
Rotor Inertia(kg.m ²)	5.9x10 ⁻³	6.6x10 ⁻³	10.2x10 ⁻³	14.6x10 ⁻³													
Rotor Inertia(kg.m ²)	1.1	8.0x10 ⁻³	11.0x10 ⁻³	15.6x10 ⁻³													
Line-line Resistance(Ω)	4.4x10 ⁻³	0.9	0.62	0.42													
Line-line Inductance(mH)	15.2	13.9	10.9	6.7													
Electrical Time-constant(ms)	13.8	15.4	17.5	15.9													
Maximum Speed(rpm)	2500	2000	2000	2000													
Encord Type	Photoelectric encorder/Absolute encorder/Rotary transformer....																
Insulation Class	ClassF																
Safety Class	IP65																
Environment	TEMPERATURE:-20°C~+40°C HUMIDITY BELOW 90%RH NO DEWING																
Weight(kg)	13	17	21	29													
L without electric brake	176	200	237	283													
L with electromagnetic brake	224	248	285	331													
Shaft Extension LR	79	79	113	113													
Shaft Diameter S	35(+0.01~0)	35(+0.01~0)	42(0~-0.016)	42(0~-0.016)													
Key Length QK	60	60	90	90													
Key Width W	10	10	12	12													
Center Hole M	M12 Depth 25	M12 Depth 25	M16 Depth 32	M16 Depth 32													
Motor Winding Plue	Winding Leads U		V		W	PE											
	Aviation Plug Socket Number A		B		C	D											
Photoelectric Encoder Socket (15Pin)	Winding Leads		5V	0V	A+	B+	Z+	A-	B-	Z-	U+	V+	W+	U-	V-	W-	PE
	Socket Number		2	3	4	5	6	7	8	9	10	11	12	13	14	15	1
Absolute Encoder Socket (7Pin)	Winding Leads		E-	E+		SD-	0V	SD+	+5V		PE						
	Socket Number		2	3	4	5	6	7	1								

SERIES SERVO MOTORS

110H6 ST

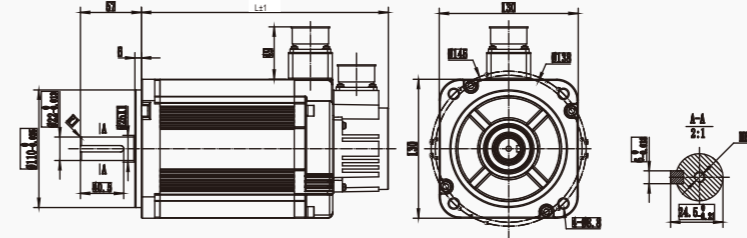
DIMENSION:UNIT=mm



SERIES SERVO MOTORS

130H6 ST

DIMENSION:UNIT=mm



SPECIFICATIONS

MOTER MODEL	110H6ST-J04220LB	110H6ST-J05420LB	110H6ST-J06420LB	110H6ST-J07520LB												
Rated Power(kW)	0.88	1.1	1.3	1.5												
Rated Voltage(V)	220	220	220	220												
Rated Current(A)	4.5	5.4	6.5	7.5												
Peak Current(A)	13.5	16.2	19.5	22.5												
Rated Torque(N.m)	4.2	5.4	6.4	7.5												
Peak Torque(N.m)	12.6	16.2	19.2	22.5												
Rated Speed(rpm)	2000	2000	2000	2000												
Peak Speed(rpm)	3000	3000	3000	3000												
Line to line resistance (20°C) Ω	1.6	1.3	1.0	0.8												
Inter-line inductance Iq(20°C)	7.4	6.4	5.4	4.5												
Voltage Constant(V/1000r/min)	65	66	66	65												
Polar Number	5	5	5	5												
Rotor Inertia(kg.m ²)	0.79x10 ⁻³	0.92x10 ⁻³	1.06x10 ⁻³	1.24x10 ⁻³												
Torque Coefficient(N.m/A)	0.93	1.0	0.98	1.0												
Encoder Specifications	Tamagawa 23-bit Absolute Encoder															
Insulation Class	ClassF															
Safety Class	IP65															
Environment	TEMPERATURE:-20°C~+40°C HUMIDITY BELOW 90%RH NO DEWING															
Motor Winding Plue	Motor Winding Leads	U	V	W	PE											
	Socket Number	2	3	4	1											
Photoelectric Encoder Socket (15Pin)	Winding Leads	5V	0V	A+	B+	Z+	A-	B-	Z-	U+	V+	W+	U-	V-	W-	PE
	Socket Number	2	3	4	5	6	7	8	9	10	11	12	13	14	15	1
Absolute Encoder Socket (7Pin)	Winding Leads	E-	E+	SD-	0V	SD+	+5V	PE								
	Socket Number	2	3	4	5	6	7	1								

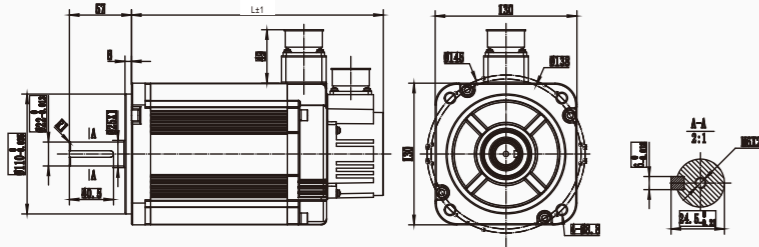
SPECIFICATIONS

MOTER MODEL	130H6ST-M05415	130H6ST-M06415	130H6ST-M07515	130H6ST-M08315												
Rated Power(kW)	0.85	1	1.2	1.3												
Rated Voltage(V)	220	220	220	220												
Rated Current(A)	6.5	6.5	9	9.5												
Peak Current(A)	19.5	19.5	27	28.5												
Rated Torque(N.m)	5.4	6.4	7.5	8.4												
Peak Torque(N.m)	16.2	19.2	22.5	25.2												
Rated Speed(rpm)	1500	1500	1500	1500												
Peak Speed(rpm)	3000	3000	3000	3000												
Line-line Resistance(Ω)	1.0	0.98	0.52	0.56												
Line-line Inductance(mH)	5.2	4.2	2.84	3.4												
Voltage Constant(V/1000r/min)	57.2	69	51.5	62.5												
Polar Number	5	5	5	5												
Rotor Inertia(kg.m ²)	1.388x10 ⁻³	1.604x10 ⁻³	1.857x10 ⁻³	2.059x10 ⁻³												
Torque Coefficient(N.m/A)	0.83	0.80	0.83	0.88												
Body Length	153	161	168	173												
Body Length	177	184	191	197												
Electrical Time-constant(ms)	5.2	4.29	5.46	6.07												
Encord Line Number(PPR)	2500ppr/17bit/23bit/rotary															
Insulation Class	ClassF															
Safety Class	IP65															
Environment	TEMPERATURE:-20°C~+40°C HUMIDITY BELOW 90%RH NO DEWING															
Motor Winding Plue	Motor Winding Leads	U	V	W	PE											
	Socket Number	2	3	4	1											
Photoelectric Encoder Socket (15Pin)	Winding Leads	5V	0V	A+	B+	Z+	A-	B-	Z-	U+	V+	W+	U-	V-	W-	PE
	Socket Number	2	3	4	5	6	7	8	9	10	11	12	13	14	15	1
Absolute Encoder Socket (7Pin)	Winding Leads	E-	E+	SD-	0V	SD+	+5V	PE								
	Socket Number	2	3	4	5	6	7	1								

SERIES SERVO MOTORS

130H6 ST

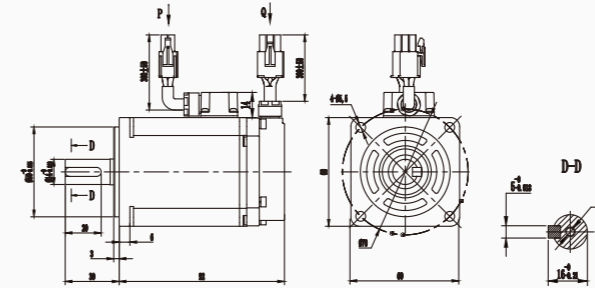
DIMENSION:UNIT=mm



SERIES SERVO MOTORS

60X6 ST

DIMENSION:UNIT=mm



SPECIFICATIONS

MOTER MODEL	130H6ST-M09615	130H6ST-M11515	130H6ST-M14615													
Rated Power(kW)	1.5	1.8	2.3													
Rated Voltage(V)	220	220	220													
Rated Current(A)	10	14	16													
Peak Current(A)	30	42	48													
Rated Torque(N.m)	9.6	11.5	14.6													
Peak Torque(N.m)	28.8	34.5	43.8													
Rated Speed(rpm)	1500	1500	1500													
Peak Speed(rpm)	3000	3000	3000													
Line-line Resistance(Ω)	0.55	0.4	0.24													
Line-line Inductance(mH)	3.7	2.8	1.9													
Voltage Constant(V/1000r/min)	61	67	60													
Polar Number	5	5	5													
Rotor Inertia(kg.m ²)	2,369x10 ⁻³	3,015x10 ⁻³	4,07x10 ⁻³													
Torque Coefficient(N.m/A)	0.96	0.82	0.91													
Body Length	182	200	232													
Body Length	205	224	256													
Electrical Time-constant(ms)	6.73	7.00	7.92													
Encord Line Number(PPR)	2500ppr/17bit/23bit/rotary															
Insulation Class	ClassF															
Safety Class	IP65															
Environment	TEMPERATURE:-20°C~+40°C HUMIDITY BELOW 90%RH NO DEWING															
Motor Winding Plue	Motor Winding Leads	U	V	W	PE											
	Socket Number	2	3	4	1											
Photoelectric Encoder Socket (15Pin)	Winding Leads	5V	0V	A+	B+	Z+	A-	B-	Z-	U+	V+	W+	U-	V-	W-	PE
	Socket Number	2	3	4	5	6	7	8	9	10	11	12	13	14	15	1
Absolute Encoder Socket (7Pin)	Winding Leads	E-	E+	SD-	0V	SD+	+5V	PE								
	Socket Number	2	3	4	5	6	7	1								

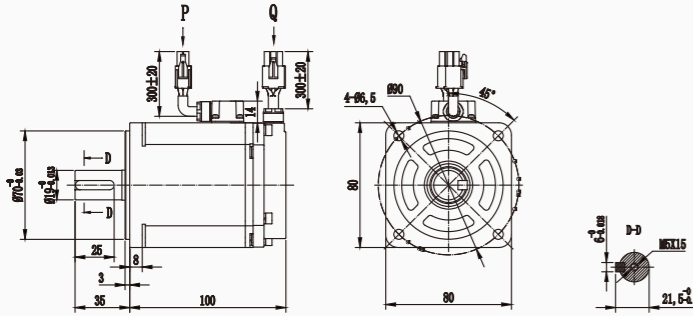
SPECIFICATIONS

MOTER MODEL	60X6ST-M00630	60X6ST-M01330	60X6ST-M01930													
Rated Power(kW)	0.2	0.4	0.6													
Rated Voltage(V)	220	220	220													
Rated Current(A)	1.7	2.5	4.1													
Peak Current(A)	5.1	7.5	12.3													
Rated Torque(N.m)	0.64	12.7	1.91													
Peak Torque(N.m)	1.91	3.81	5.73													
Rated Speed(rpm)	3000	3000	3000													
Peak Speed(rpm)	6000	6000	6000													
Line-line Resistance(Ω)	4.5	3.3	2.5													
Line-line Inductance(mH)	10.8	6.9	4.5													
Voltage Constant(V/1000r/min)	23	30.7	30													
Polar Number	5	5	5													
Rotor Inertia(kg.m ²)	0,028x10 ⁻³	0,052x10 ⁻³	0,078x10 ⁻³													
Torque Coefficient(N.m/A)	0.38	0.51	0.47													
Body Length	75	92	109													
Body Length	105	122	139													
Electrical Time-constant(ms)	2.40	2.09	1.8													
Encord Line Number(PPR)	2500ppr/17bit/23bit/rotary															
Insulation Class	ClassF															
Safety Class	IP65															
Environment	TEMPERATURE:-20°C~+40°C HUMIDITY BELOW 90%RH NO DEWING															
Motor Winding Plue	Motor Winding Leads	U	V	W	PE											
	Socket Number	1	2	3	4											
Photoelectric Encoder Socket (15Pin)	Winding Leads	5V	0V	B	Z-	U	Z	U-	A	V	W	V-	A-	B-	W-	PE
	Socket Number	2	3	4	5	6	7	8	9	10	11	12	13	14	15	1
Absolute Encoder Socket (7Pin)	Winding Leads	E-	E+	SD-	0V	SD+	+5V	PE								
	Socket Number	2	3	4	5	6	7	1								

SERIES SERVO MOTORS

80X6 ST

DIMENSION:UNIT=mm



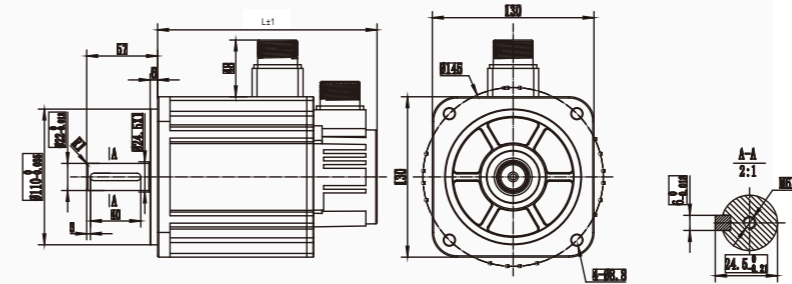
SPECIFICATIONS

MOTER MODEL	80X6ST-C02430	80X6ST-C03330														
Rated Power(kW)	0.75	1														
Rated Voltage(V)	220	220														
Rated Current(A)	4.4	5.8														
Peak Current(A)	13.2	17.4														
Rated Torque(N.m)	2.39	3.3														
Peak Torque(N.m)	7.17	9.9														
Rated Speed(rpm)	3000	3000														
Peak Speed(rpm)	6000	6000														
Line-line Resistance(Ω)	1.15	0.78														
Line-line Inductance(mH)	4.9	3.2														
Voltage Constant(V/1000r/min)	33	32														
Polar Number	5	5														
Rotor Inertia(kg.m ²)	0.148x10 ⁻³	0.227x10 ⁻³														
Torque Coefficient(N.m/A)	0.54	0.57														
Body Length	100	113														
Body Length	134	147														
Electrical Time-constant(ms)	4.26	4.10														
Encord Line Number(PPR)	2500ppr/17bit/23bit															
Insulation Class	ClassF															
Safety Class	IP65															
Environment	TEMPERATURE:-20°C~+40°C HUMIDITY BELOW 90% RH NO DEWING															
Motor Winding Plue	Motor Winding Leads Socket Number	U 1	V 2	W 3	PE 4											
Photoelectric Encoder Socket (15Pin)	Winding Leads Socket Number	5V 2	0V 3	B 4	Z- 5	U 6	Z 7	U- 8	A 9	V 10	W 11	V- 12	A- 13	B- 14	W- 15	PE 1
Absolute Encoder Socket (7Pin)	Winding Leads Socket Number	E- 2	E+ 3	SD- 4	0V 5	SD+ 6	+5V 7	PE 1								

SERIES SERVO MOTORS

130X6 ST

DIMENSION:UNIT=mm



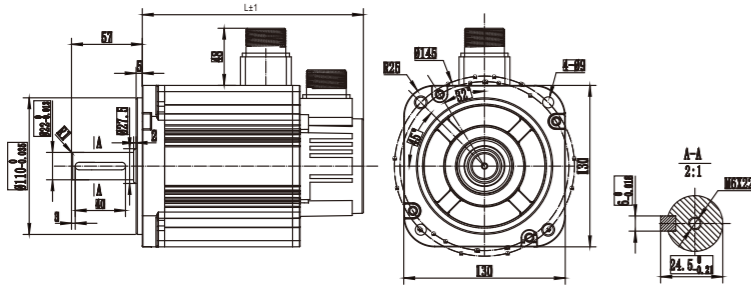
SPECIFICATIONS

MOTER MODEL	130X6ST-M05415	130X6ST-M08315	130X6ST-M11515	130X6ST-M14615												
Rated Power(kW)	0.85	1.3	1.8	2.3												
Rated Voltage(V)	220	220	220	220												
Rated Current(A)	5	9.2	12	16												
Peak Current(A)	15	27.6	36	40												
Rated Torque(N.m)	5.39	8.34	11.5	14.6												
Peak Torque(N.m)	16.1	25	34.5	36.5												
Rated Speed(rpm)	1500	1500	1500	1500												
Peak Speed(rpm)	3000	3000	3000	3000												
Line-line Resistance(Ω)	1.24	0.55	0.4	0.34												
Line-line Inductance(mH)	13.8	7.4	5.3	4.9												
Voltage Constant(V/1000r/min)	63	56	54	64												
Polar Number	5	5	5	5												
Rotor Inertia(kg.m ²)	0.72x10 ⁻³	1.03x10 ⁻³	1.27x10 ⁻³	1.97x10 ⁻³												
Torque Coefficient(N.m/A)	1.08	0.91	0.96	0.91												
Body Length	152.5	177.5	177.5	222												
Body Length	186	211	211	255.5												
Electrical Time-constant(ms)	11.13	13.45	13.25	14.41												
Encord Line Number(PPR)	2500ppr/17bit/23bit/rotary															
Insulation Class	ClassF															
Safety Class	IP65															
Environment	TEMPERATURE:-20°C~+40°C HUMIDITY BELOW 90% RH NO DEWING															
Motor Winding Plue	Motor Winding Leads Socket Number	U 2	V 3	W 4	PE 1											
Photoelectric Encoder Socket (15Pin)	Winding Leads Socket Number	5V 2	0V 3	A+ 4	B+ 5	Z+ 6	A- 7	B- 8	Z- 9	U+ 10	V+ 11	W+ 12	U- 13	V- 14	W- 15	PE 1
Absolute Encoder Socket (7Pin)	Winding Leads Socket Number	E- 2	E+ 3	SD- 4	0V 5	SD+ 6	+5V 7	PE 1								

SERIES SERVO MOTORS

130G6 ST

DIMENSION:UNIT=mm



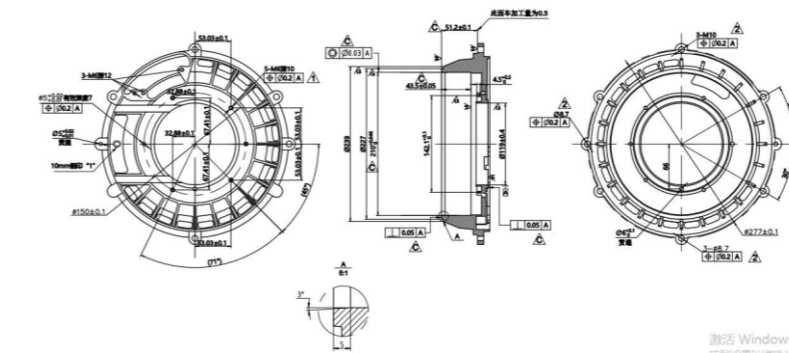
SPECIFICATIONS

MOTER MODEL	130G6ST-JC05415LB	130G6ST-JC08315LB	130G6ST-JC11515LB	130G6ST-JC14615LB												
Rated Power(kW)	0.85	1.3	1.8	2.3												
Rated Voltage(V)	220	220	220	220												
Rated Current(A)	5.3	7.5	10.5	14												
Peak Current(A)	15.9	22.5	31.5	42												
Rated Torque(N.m)	5.4	8.34	11.5	14.6												
Peak Torque(N.m)	16.2	25	34.5	43.8												
Rated Speed(rpm)	1500	1500	1500	1500												
Peak Speed(rpm)	3000	3000	3000	3000												
Line to line resistance (20°C) Ω	1.25±10%	0.78±10%	0.49±10%	0.34±10%												
Inter-line inductance Iq(20°C)	10.7±20%	8.0±20%	5.4±20%	3.8±20%												
Voltage Constant(V/1000r/min)	64	65	64	63												
Polar Number	5	5	5	5												
Rotor Inertia(kg.m ²)	1.25x10 ⁻³	1.78x10 ⁻³	2.41x10 ⁻³	3.15x10 ⁻³												
Torque Coefficient(N.m/A)	1.02	1.112	1.1	1.04												
Encoder Specifications	17-bit Magnetic Encoder															
Insulation Class	ClassF															
Safety Class	IP65															
Environment	TEMPERATURE:-20°C~+40°C HUMIDITY BELOW 90%RH NO DEWING															
Motor Winding Plue	Motor Winding Leads	U	V	W	PE											
	Socket Number	2	3	4	1											
Photoelectric Encoder Socket (15Pin)	Winding Leads	5V	0V	A+	B+	Z+	A-	B-	Z-	U+	V+	W+	U-	V-	W-	PE
	Socket Number	2	3	4	5	6	7	8	9	10	11	12	13	14	15	1
Absolute Encoder Socket (7Pin)	Winding Leads	E-	E+	SD-	0V	SD+	+5V	PE								
	Socket Number	2	3	4	5	6	7	1								

SERIES SERVO MOTORS

210 ST

DIMENSION:UNIT=mm



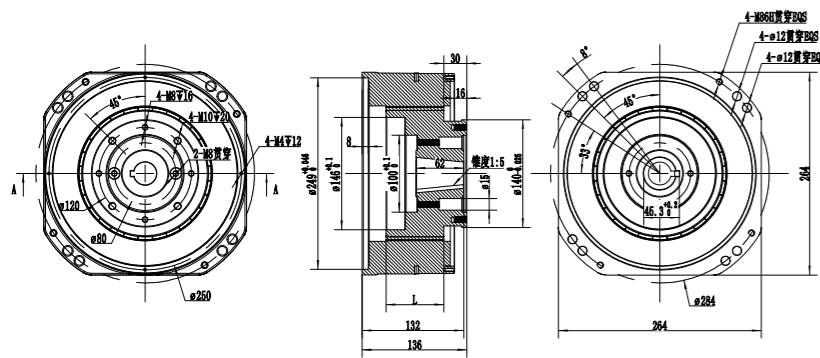
SPECIFICATIONS

MOTER MODEL	210ST- X38005P	210ST- X38010P	210ST- X100003P
Rated Power(kW)	1.78	3.57	3.1
Rated Voltage(V)	220	220	220
Rated Current(A)	6	12	18
Rated Speed(rpm)	500	1000	300
Rated Torque(N.m)	38	38	100
Winding (inter-line) resistance (Ω)	3.1	0.78	1.1
Winding (inter-line) inductance (mH)	52	11.5	28.4
Electrical time constant (ms)	16.6	14.7	25.8
Encoder	Single-pole rotary / 17-bit Absolute Value		
Insulation Class	Class F		
Safety Class	Ip00		
Environment	TEMPERATURE:-20°C~+40°C HUMIDITY BELOW 90%RH NO DEWING		

SERIES SERVO MOTORS

260 ZQ

DIMENSION:UNIT=mm



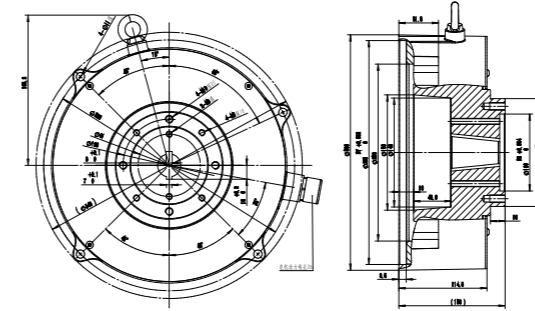
SPECIFICATIONS

MOTER MODEL	260ZQ-40010HB	260ZQ-80006HB	260ZQ-54008HB
Rated Power(kW)	4.1	5.0	4.5
Rated Voltage(V)	380	380	380
Rated Current(A)	8.5	10.8	9.8
Rated Speed(rpm)	1000	600	800
Rated Speed(rpm)	1100	700	900
Rated Torque(N.m)	40	80	54
Rated Frequency	233	140	186.6
Polar Number	14	14	14
Back-EMF(V/Krp)mH	330	488	385
Insulation Class	ClassF		
Safety Class	Ip54		
Environment	TEMPERATURE:-20°C~+40°C HUMIDITY BELOW 90%RH NO DEWING		

SERIES SERVO MOTORS

290 ZQ

DIMENSION:UNIT=mm



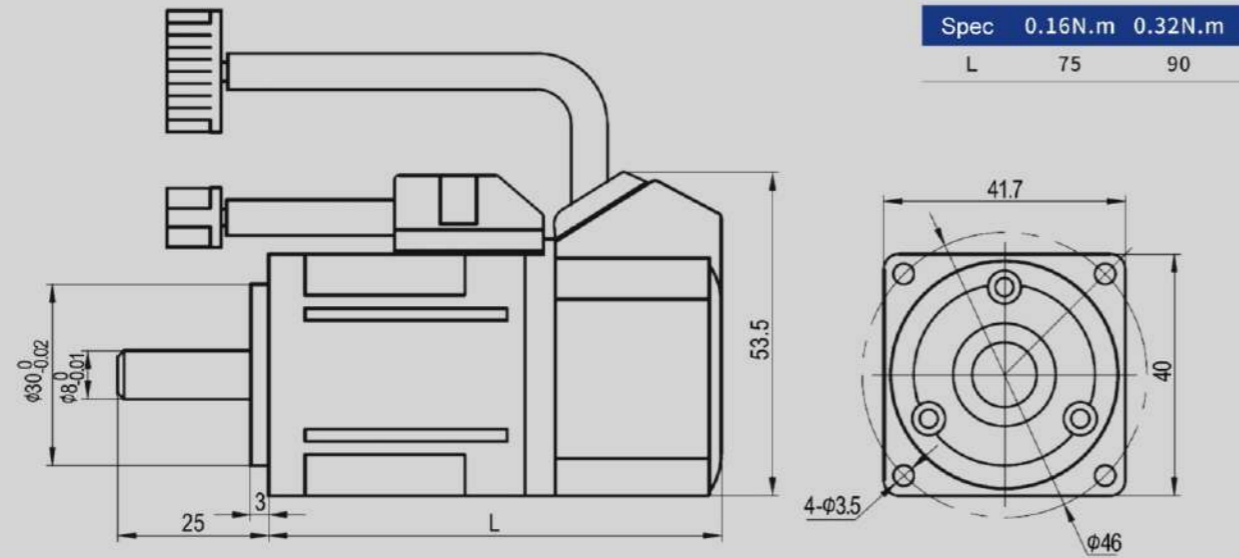
SPECIFICATIONS

MOTER MODEL	290ZQ—54009B
Rated Power(kW)	380V
Rated Voltage(V)	5.0Kw
Rated Current(A)	900rpm
Rated Speed(rpm)	1000rpm
Rated Speed(rpm)	53.7N · M
Rated Torque(N.m)	9.9A
Rated Frequency	210HZ
Electronic Inertia	1450X10 ⁻⁴ Kg·M ²
Back-EMF(V/Krp)mH	345V/Krpm
Polar Number	14
Line to line Resistance (20°C)	0.34Ω±10%
Inter-line Inductance Iq(20°C)	7.9mH±20%
Inter-line Inductance Id (20°C)	6.8mH±20%

40A ST

40 SERIES DC24V SERVO MOTORS

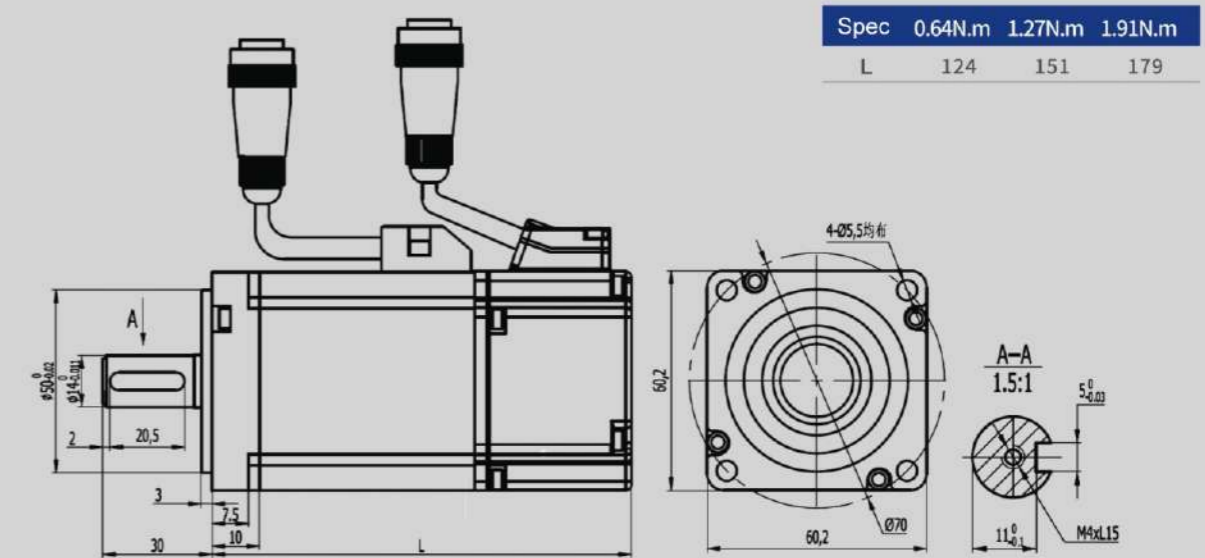
▶ DIMENSION: UNIT=mm



60A ST

60 SERIES DC24V SERVO MOTORS

▶ DIMENSION: UNIT=mm



▶ Specifications

Motor Model	40AST-M00130	40AST-M00330
Rated Power(W)	50	100
Rated Voltage(V)	24	24
Rated Current(A)	2.6	5.2
Rated Speed(RPM)	3000	3000
Rated Torque(N.m)	0.16	0.32
Voltage Constant (V/1000r/min)	4	4
Torque Coefficient(N.m/A)	0.067	0.061
Rotor Inertia(KG.M ²)	0.025 × 10 ⁻⁴	0.051 × 10 ⁻⁴
Line-line Resistance(Ω)	1.39	0.49
Line-line Inductance(mH)	1.52	0.71
Electrical Time-constant(ms)	1.09	1.45
Encoder Line Number(PPR)	2500	2500
Insulation Class	ClassB(130°C)	ClassB(130°C)
Safety Class	IP64	IP64
Environment	Temperature: -20°C ~ +50°C Humidity Below 90%rh No Dewing	

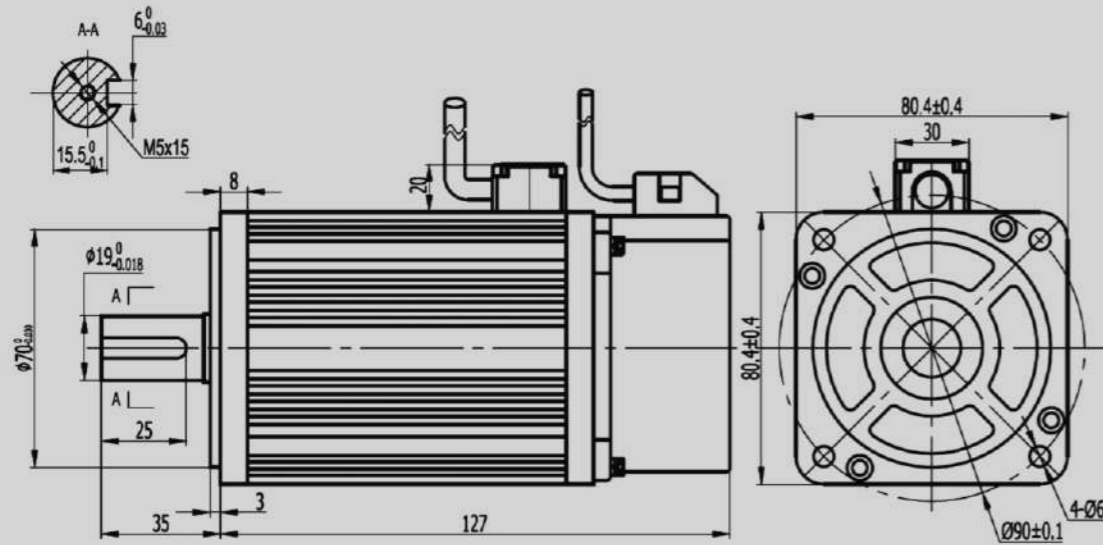
▶ Specifications

Motor Model	60AST-M00630
Rated Power(W)	200
Rated Voltage(V)	24
Rated Current(A)	12
Rated Speed(RPM)	3000
Rated Torque(N.m)	0.637
Voltage Constant (V/1000r/min)	4
Torque Coefficient(N.m/A)	0.053
Rotor Inertia(KG.M ²)	0.175 × 10 ⁻⁴
Line-line Resistance(Ω)	0.11
Line-line Inductance(mH)	0.42
Electrical Time-constant(ms)	3.81
Encoder Line Number(PPR)	2500
Insulation Class	ClassF
Safety Class	IP65
Environment	Temperature: -20°C ~ +50°C Humidity Below 90%rh No Dewing

80 ST

80 SERIES DC24V SERVO MOTORS

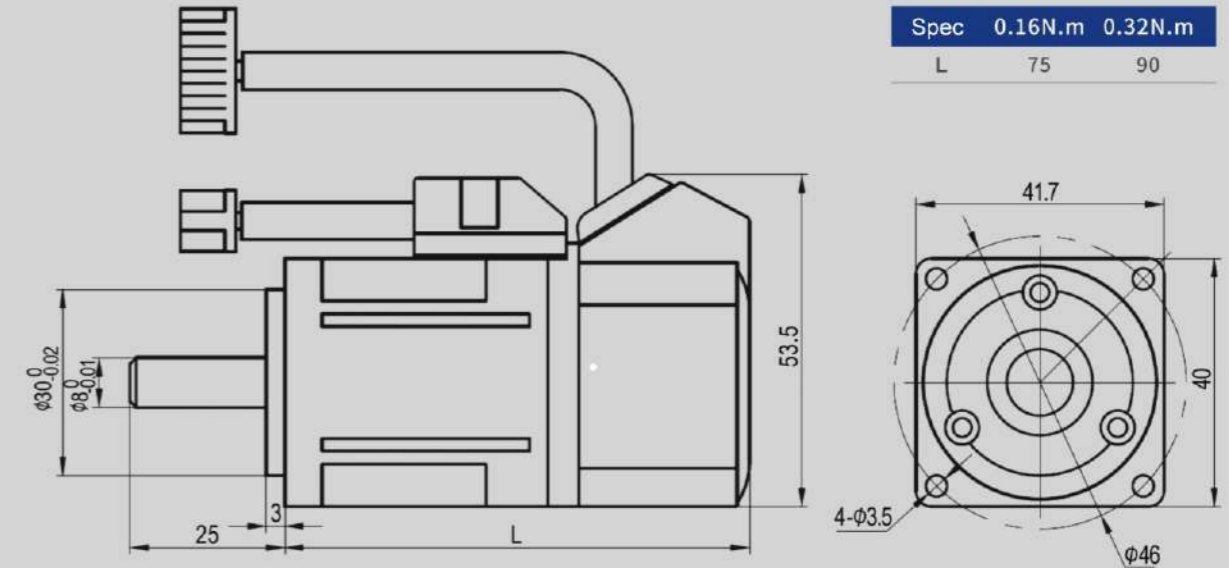
► DIMENSION: UNIT=mm



40A ST

40 SERIES DC48V SERVO MOTORS

► DIMENSION: UNIT=mm



► Specifications

Motor Model	80ST-M01330	80ST-M02430
Rated Power(W)	400	750
Rated Voltage(V)	24	24
Rated Current(A)	20	34
Rated Speed(RPM)	3000	3000
Rated Torque(N.m)	1.27	2.39
Voltage Constant (V/1000r/min)	4.5	4.6
Torque Coefficient(N.m/A)	0.063	0.07
Rotor Inertia(KG.M ²)	1.05×10^{-4}	1.82×10^{-4}
Line-line Resistance(Ω)	0.06	0.028
Line-line Inductance(mH)	0.093	0.054
Electrical Time-constant(ms)	1.55	1.93
Encoder Line Number(PPR)	2500	2500
Insulation Class	ClassF	ClassF
Safety Class	IP65	IP65
Environment	Temperature: -20°C ~ +50°C Humidity Below 90%rh No Dewing	

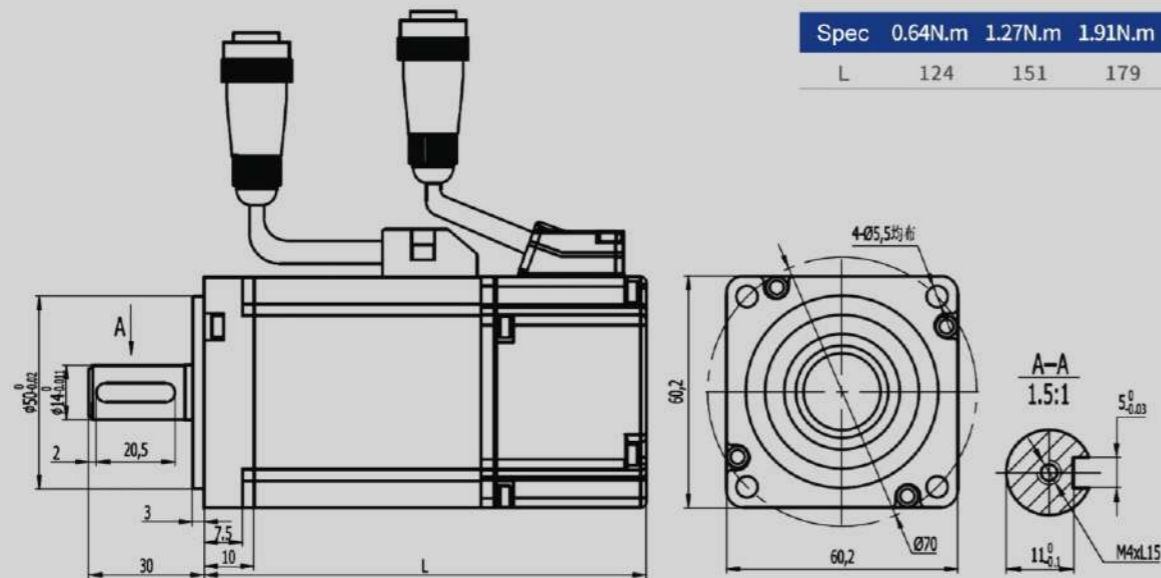
► Specifications

Motor Model	40AST-M00130	40AST-M00330
Rated Power(W)	50	100
Rated Voltage(V)	48	48
Rated Current(A)	1.1	2.5
Rated Speed(RPM)	3000	3000
Rated Torque(N.m)	0.16	0.32
Voltage Constant (V/1000r/min)	9.2	8.2
Torque Coefficient(N.m/A)	0.145	0.128
Rotor Inertia(KG.M ²)	0.025×10^{-4}	0.051×10^{-4}
Line-line Resistance(Ω)	6.75	2.2
Line-line Inductance(mH)	7.5	3
Electrical Time-constant(ms)	1.11	1.36
Encoder Line Number(PPR)	2500	
Insulation Class	ClassB(130°C)	
Safety Class	IP64	
Environment	Temperature: -20°C ~ +50°C Humidity Below 90%rh No Dewing	

60A ST

60 SERIES DC48V SERVO MOTORS

➤ DIMENSION: UNIT=mm



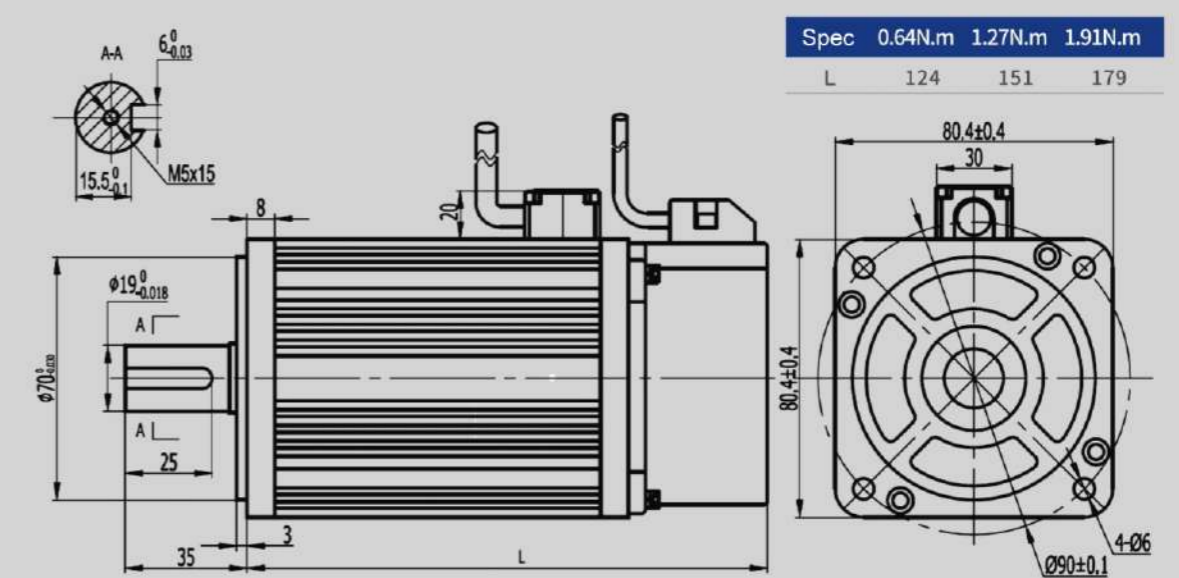
➤ Specifications

Motor Model	60AST - M00630	60AST - M01330	60AST - M01930
Rated Power(W)	200	400	600
Rated Voltage(V)	48	48	48
Rated Current(A)	5.7	11	14.5
Rated Speed(RPM)	3000	3000	3000
Rated Torque(N.m)	0.64	1.27	1.91
Voltage Constant (V/1000r/min)	8	8	8.5
Torque Coefficient(N.m/A)	0.112	0.115	0.132
Rotor Inertia(KG.M ²)	0.175×10^{-4}	0.29×10^{-4}	0.39×10^{-4}
Line-line Resistance(Ω)	0.3	0.15	0.138
Line-line Inductance(mH)	1.378	0.708	0.64
Electrical Time-constant(ms)	4.59	4.72	4.64
Encoder Line Number(PPR)	2500		
Insulation Class	ClassB(130°C)		
Safety Class	IP64		
Environment	Temperature: -20°C ~ +50°C Humidity Below 90%rh No Dewing		

80 ST

80 SERIES DC48V SERVO MOTORS

➤ DIMENSION: UNIT=mm



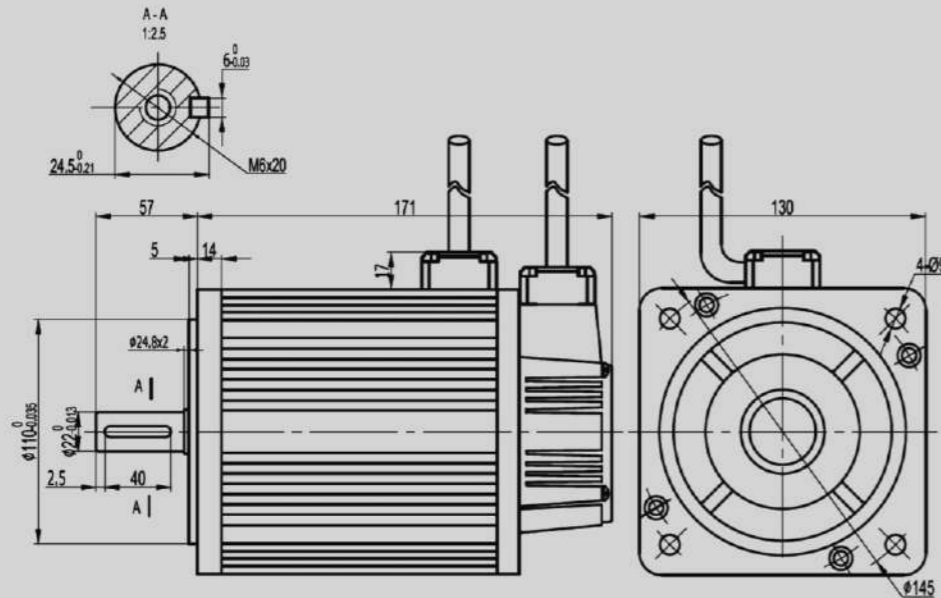
➤ Specifications

Motor Model	80ST-M01330	80ST-M02430	80ST-M04025
Rated Power(W)	400	750	1000
Rated Voltage(V)	48	48	48
Rated Current(A)	10.9	19.5	27
Rated Speed(RPM)	3000	3000	2500
Rated Torque(N.m)	1.27	2.39	4
Voltage Constant (V/1000r/min)	7.2	7.4	9.2
Torque Coefficient(N.m/A)	0.115	0.123	0.148
Rotor Inertia(KG.M ²)	1.05×10^{-4}	1.82×10^{-4}	2.97×10^{-4}
Line-line Resistance(Ω)	0.15	0.066	0.053
Line-line Inductance(mH)	0.27	0.151	0.131
Electrical Time-constant(ms)	1.8	2.29	2.47
Encoder Line Number(PPR)	2500		
Insulation Class	ClassB(130°C)		
Safety Class	IP64		
Environment	Temperature: -20°C ~ +50°C Humidity Below 90%rh No Dewing		

130 ST

130 SERIES DC48V SERVO MOTORS

► DIMENSION: UNIT=mm



► Specifications

Motor Model	130ST-M05030	130ST-M10015	130ST-M06030	130ST-M12020	130ST-M08030	130ST-M10030
Rated Power(W)	1500	1500	2000	2500	2500	3000
Rated Voltage(V)	48	48	48	48	48	48
Rated Current(A)	35	38	50	60	60	88
Rated Speed(RPM)	3000	1500	3000	2000	3000	3000
Rated Torque(N.m)	5	10	6.3	12	7.9	10
Voltage Constant (V/1000r/min)	9.80	17.00	9.40	12.00	10.00	7.60
Torque Coefficient(N.m/A)	0.143	0.263	0.126	0.181	0.132	0.11
Rotor Inertia(KG.M ²)	1.06×10^{-3}	1.94×10^{-3}	1.26×10^{-3}	2.77×10^{-3}	1.53×10^{-3}	1.94×10^{-3}
Line-line Resistance(Ω)	0.03	0.043	0.029	0.013	0.02	0.0077
Line-line Inductance(mH)	0.087	0.161	0.089	0.046	0.463	0.021
Electrical Time-constant(ms)	2.9	3.74	3.20	3.59	2.31	2.72
Encoder Line Number(PPR)	2500	2500	2500	2500	2500	2500
Insulation Class	ClassB(130°C)	ClassF	ClassF	ClassF	ClassF	ClassF
Safety Class	IP64	IP65	IP65	IP65	IP65	IP65
Environment	Temperature: -20°C ~ +50°C Humidity Below 90%rh No Dewing					

TorqueBank

WWW.TORQUEBANK.COM